

How to re-size an image in photoshop or elements for PDI competitions

At Morriston Camera Club

1. Introduction
2. PDI Rules
3. How to resize an image

1. Introduction

This document has been produced to help standardise the way images are entered for the PDI competition. This will allow the processing of images faster with less chance of any image being rejected. It is the photographers' responsibility to ensure that the images entered adhere to the following guidelines.

For any queries on this document please contact the current Internal Competition Secretary.

Note:- The screen shots in this document are from Photoshop CS6, they will be slightly different in appearance in later versions of photoshop and Elements.

2. Current PDI Rules

Images should be submitted as JPG files sized to fit a max width of 1400 pixels and a max height of 1050 pixels.

Photographs must be entirely the work of the member and must have been taken in the last two years.

Photographs that have been entered into any previous Monthly Competition will be disqualified.

The same image may not be used for both the print competition and the PDI competition.

Each member may enter up to TWO images in each individual competition round. Only the highest scoring of the images will count towards the photographer's annual total. The photographer with the highest total at the end of the year will be confirmed as PDI photographer of the year and will be presented with a trophy to be held for one year.

The committee reserves the right to reject any image which is considered to be inappropriate.

The PDI competition will comprise 4 individual rounds.

Judging will be undertaken by an invited judge who will mark each entry out of a possible maximum score of 20 points. (unless the judge has a specific marking schedule that he/she prefers to use).

Images should be submitted using the Club's PhotoEntry site and system. Guidance videos on the use of the PhotoEntry system are available on the website:

[Introduction to PhotoEntry Part 1](#)

And

[Introduction to PhotoEntry part 2](#)

3. How to resize an image

Images should be submitted as JPG files sized to fit a max width of 1400 pixels and a max height of 1050 pixels.

STEPS TO RE-SIZE AN IMAGE

Step 1.

Open your image in Photoshop or Elements complete your adjustments etc, then click on 'Image' in the menu bar then down to 'Image Size' as in Fig.1 below.

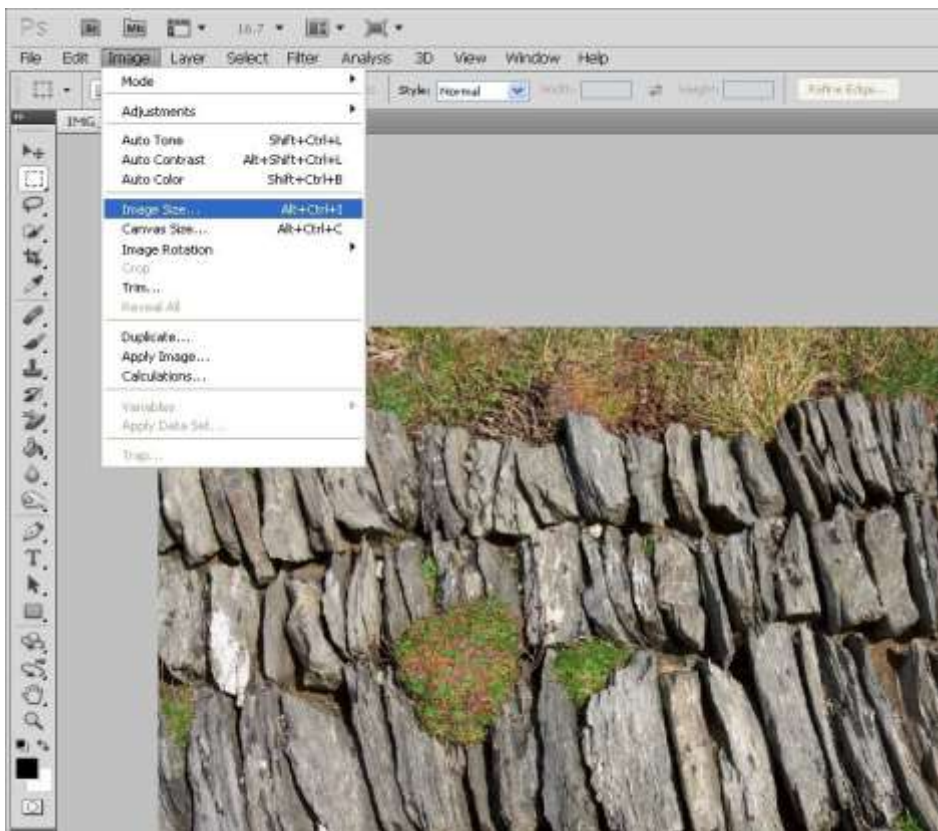


Fig 1

The following dialogue box will appear – (Fig 2)

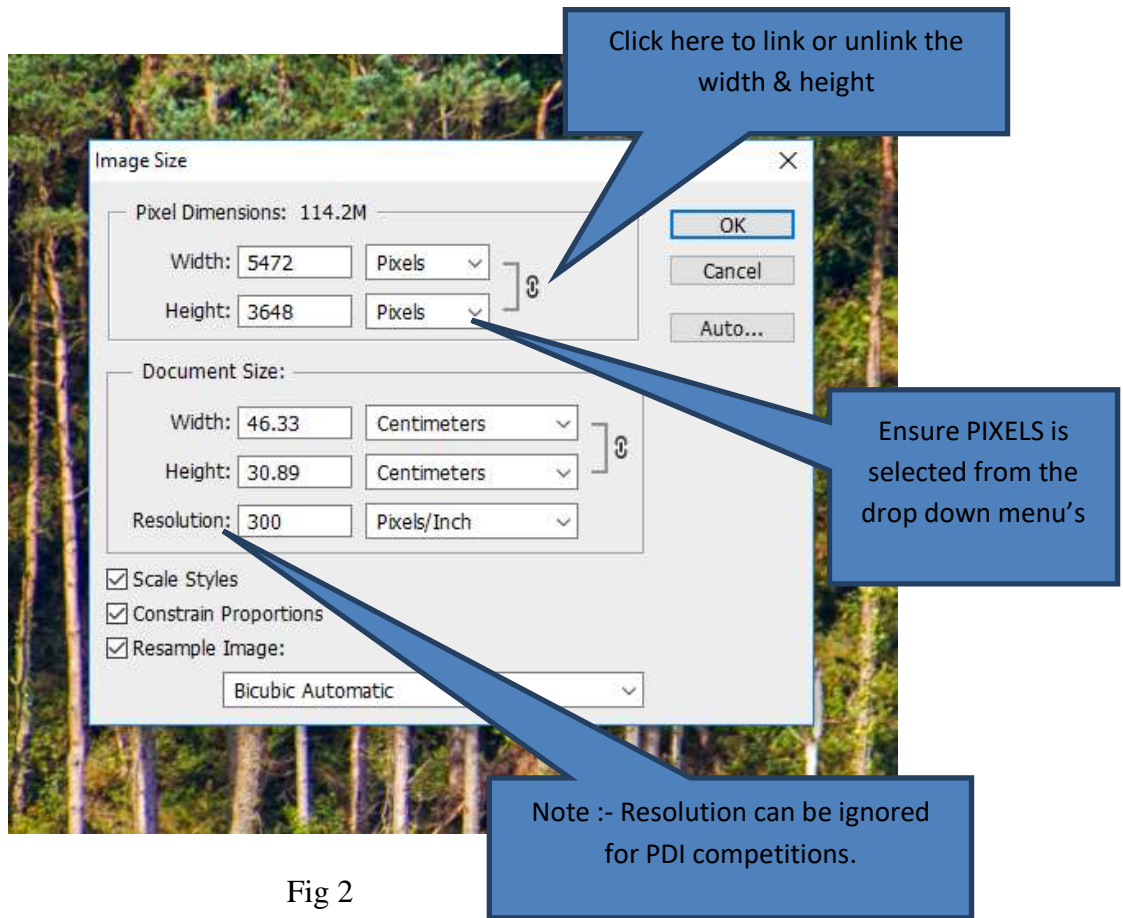


Fig 2

This shows the dimensions of the picture in Pixels (top section) and the actual document size in 'cm' (middle section).

You can click one of the down arrows in the Document Size section to see the size in 'inches' as 'cm' is the default measurement.

Step 2 Re-sizing the image – reducing the number of pixels in the image

Ensure the link between the height and width is linked as shown in the image below, if it is not then left click on the chain to link them together.

See Fig 3 below.

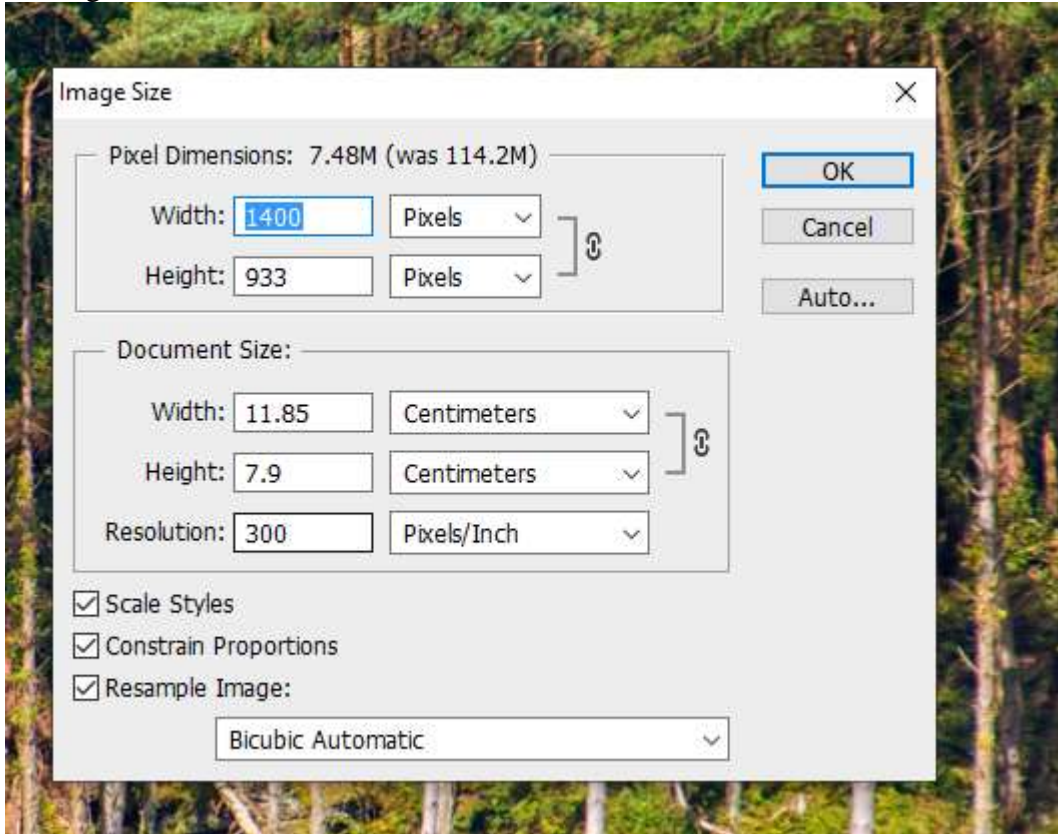


Fig 3

If your picture is in landscape format, highlight the number of pixels in the WIDTH box of the 'Pixel Dimensions' section and replace with 1400 pixels
Ensure the height is 1050 or less, If not then change the height to 1050. This will reduce the width to less than 1400 but this will not matter.

If your picture is in portrait (upright format), highlight the number of pixels in the HEIGHT box of the 'Pixel Dimensions' section and replace with 1050 pixels.
Ensure the width is 1400 or less, If not then change the width to 1400. This will reduce the height to less than 1050 but this will not matter.

As the 'Constrain Proportions' box is ticked (bottom section), any changes you make to the number of pixels in the Width box, automatically changes the corresponding figure in the Height box and vice versa. You only have to make changes to ONE of the boxes, Photoshop makes the appropriate changes to the other box to maintain the proportions of the picture.

CLICK OK to confirm the re-sizing of your picture.

NB. Make sure you save the re-sized picture as a 'JPEG' using 'SAVE AS' and give it a different file name to the original image otherwise you will overwrite the original and lose it! Also make sure you know the destination folder where you are saving the picture to.

Fig 4

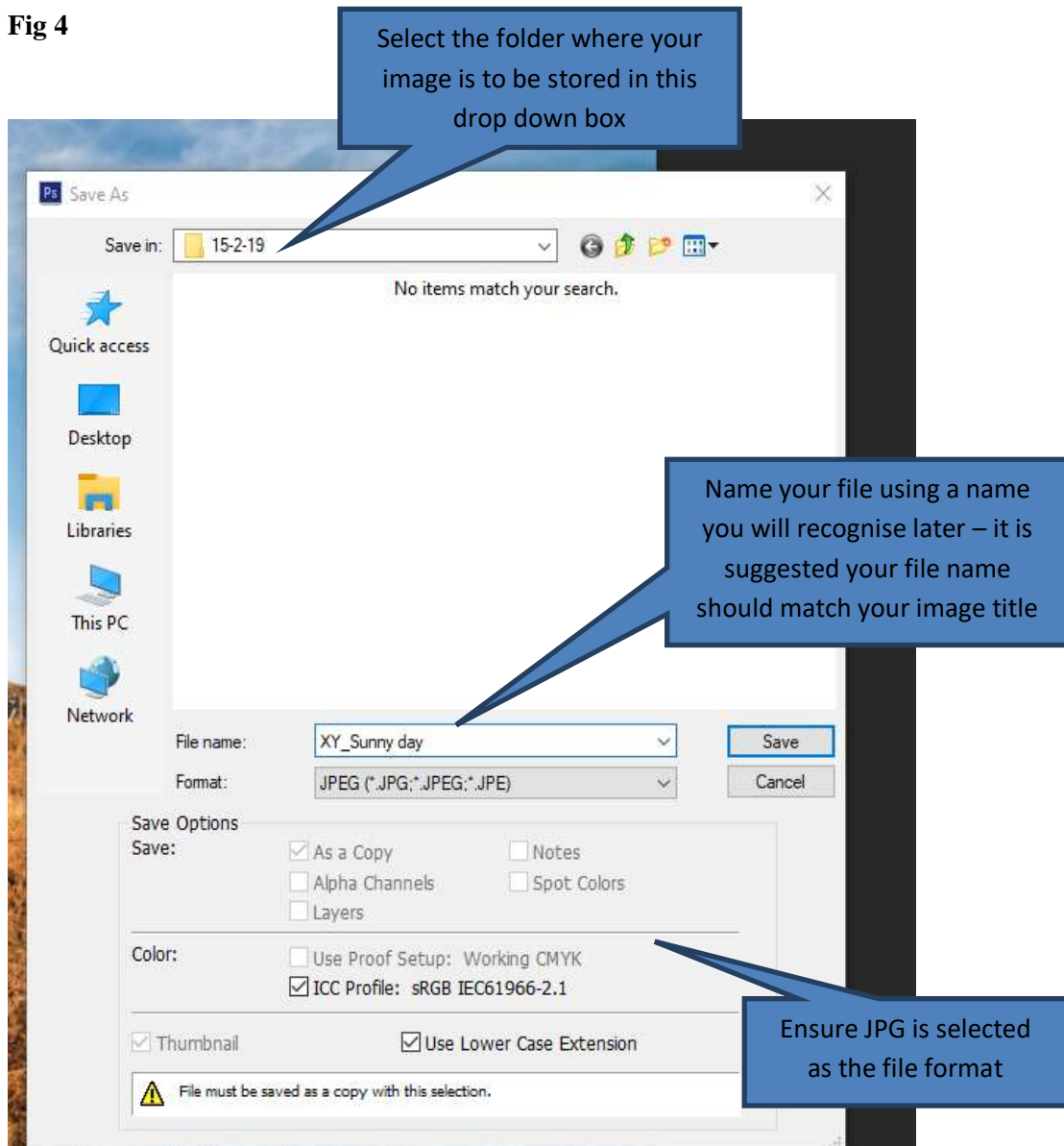
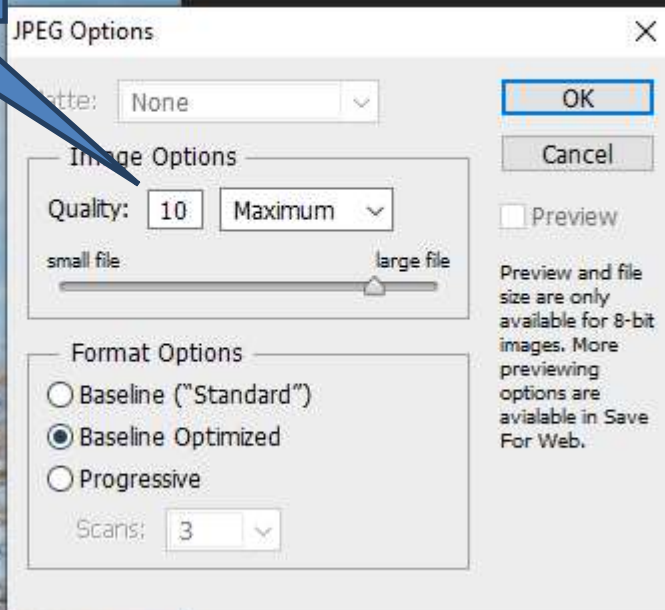


Fig 5

Ensure quality is set to 10 or 12 (Max)



Preview and file size are only available for 8-bit images. More previewing options are available in Save For Web.